



**MIDLAND<sup>®</sup>**



**2012 MOTORCYCLE COMMUNICATIONS  
CATALOGUE**



## MIDLAND REWRITES THE RULES OF MOTO COMMUNICATION

The new line “**Next Generation**” Intercoms has been designed with one clear objective: to enable motorcyclists to communicate simply and in complete safety. Midland Intercoms privilege communication, leaving the spirit of the whole motorcycle experience intact.

*Communicating with no distractions and without renouncing real riding pleasure.*

The **BT Remote** wireless remote control ensures that handlebar controls are available on the whole of the “**Next Generation**” line; another step towards simplicity of use and safety.

*When starting off on a journey, we are united by a passion for motorcycling, whatever the brands or model...*

With the “**Talk2All-Universal Intercom**”, Midland intercoms can even talk to different brand intercoms.

**Let yourself be carried away by your passion... Midland will take care of communication.**



### “THE NEXT GENERATION”

The intercoms destined to change the concept of motorcycle communication, thanks to their innovative characteristics and functions.

### BT REMOTE

The wireless handlebar remote control that is immediate and extremely simple, designed to guarantee Midland users enjoy safety and comfort.

### MIDLAND G8 BT

The PMR446 transceiver with built-in Bluetooth, specifically designed for communication between an unlimited group of motorcyclists.



### TALK2ALL - UNIVERSAL INTERCOM

Midland offers this revolutionary function to free up communication between motorcyclists using different brand intercoms. Intercoms with the Universal Intercom feature are marked by this icon

### TALK2ALL - RADIOCOMM

Midland extends communication to an unlimited number of motorcyclists with the Midland G8 BT the Bluetooth® transceiver that can be matched to any Bluetooth® intercom and earpiece. This icon marks products prepared for bike group radio communication







### **ACTION CAMERA XTC**

Not just communication! Find out just how much fun it is to video your two-wheeled adventures, whether alone or in company, using the XTC video cameras.



TALK **2** ALL





Bluetooth technology **3.0**



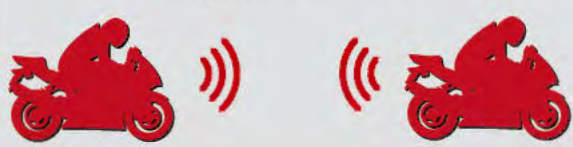
**Midland BT Next** is the key player in the Next Generation, Bluetooth® stereo **Intercom for conversations of up to 6 motorcyclists**, with a **range of action of up to 1.6 km.**

### Intercom

up to 6 people (communication in pairs)



range of up to 1.6 km





# BT NEXT

Multi Riders Intercom System

New Firmware  
**2.0**



Equipped with the Universal Intercom function to match to any brand intercom using the full duplex intercom.



**Midland BT Next** works with the Bluetooth® **Midland BT Remote** control to manage all functions directly from the motorcycle handlebar without wires and without distractions.



For group communication with no limits to the number of users, **Midland BT Next** can be used with **Midland G8BT** for communication up to 12 km.



**Stereo music** with Play/Pause and Fast-forward/Rewind control



**FM radio with RDS**, 6 station memories



**Waterproof**



**Bluetooth® Wireless Technology 3.0 with DSP**



**Vox for voice activation** of the Intercom function and telephone response (hands-free)



**AGC technology** for automatic volume control



Excellent **audio quality at high speeds** (DSP technology)



Battery life: **10 hours of conversation**



**USB programmable** (configure the device and update the firmware)



**Vocal messages:** provides vocal messages on the device status and battery charge



**Aerodynamic design**, just 18 mm thick



**Compatible with all helmet types**

## Bluetooth® connections:



**Mobile telephones/Mp3 with Bluetooth**



**GPS devices** (with **Background function** for GPS audio in the background as you speak)



**PMR446 radio with Bluetooth**

## Wire connections for rider and passenger devices:



**iPod/MP3 player stereo**



**PMR446 radio**

**Manual controls:** telephone, intercom, FM radio and wire connection activation

Available: **single pack C969**

**twinn pack C969.01**

(Package contains: see table on p. 14)





Bluetooth technology **3.0**



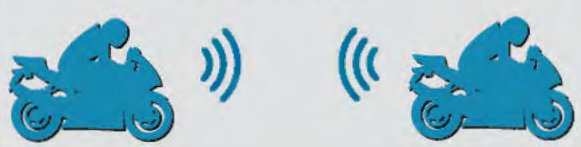
**Midland BTX2** is the new Advanced Intercom Bluetooth® Stereo System of the Next Generation for **"Rider-to-Passenger"** and **"Bike-to-Bike"** conversations involving **up to 3 motorcyclists**, with a **range of action of up to 800 metres**.

### Intercom

up to 3 people (communication in pairs)



range of up to 800 m





# BTX2

## Advanced Intercom System



Equipped with the Universal Intercom function to match to any brand intercom using the full duplex intercom.



**Midland BTX2** works with the Bluetooth® **Midland BT Remote** control to manage all functions directly from the motorcycle handlebar without wires and without distractions.



For group communication with no limits to the number of users, **Midland BTX2** can be used with **Midland G8BT** for communication up to 12 km.



**Stereo music** with Play/Pause and Fast-forward/Rewind control



**Waterproof**



**Bluetooth® Wireless Technology 3.0 with DSP**



**Vox for voice activation** of the Intercom function and telephone response (hands-free)



**AGC technology** for automatic volume control



Excellent **audio quality at high speeds**(DSP technology)



Battery life: **10 hours of conversation**



**USB programmable** (configure the device and update the firmware)



**Vocal messages:** provides vocal messages on the device status and battery charge



**Aerodynamic design**, just 18 mm thick



**Compatible with all helmet types**

### Bluetooth® connections:



**Mobile telephones/Mp3 with Bluetooth**



**GPS devices** (with **Background function** for GPS audio in the background as you speak)



**PMR446 radio with Bluetooth**

### Wire connections for rider and passenger devices:



**iPod/MP3 player stereo**



**PMR446 radio**

**Manual controls:** telephone, intercom and wire connection activation

Available: **single pack C1034**

**twin pack C1034.01**

(Package contains: see table on p. 14)





International charity event "Riders4Hope" - Central Asia 2009

Bluetooth technology **3.0**



**Midland BTX1** is the new Basic Intercom Bluetooth® Stereo System for "**Rider-to-Passenger**" conversations of the Next Generation, with a range of action of **up to 10 m**.

### Intercom

up to 2 people



range of up to 10 m





# BTX1

## Basic Intercom System



Equipped with the Universal Intercom function to match to any brand intercom using the full duplex intercom.



**Midland BTX1** works with the Bluetooth® **Midland BT Remote** control to manage all functions directly from the motorcycle handlebar without wires and without distractions.



For group communication with no limits to the number of users, **Midland BTX1** can be used with **Midland G8BT** for communication up to 12 km.



**Stereo music** with Play/Pause and Fast-forward/Rewind control



**Waterproof**



**Bluetooth® Wireless Technology 3.0 with DSP**



**Vox for voice activation** of the Intercom function and telephone response (hands-free)



**AGC technology** for automatic volume control



Excellent **audio quality at high speeds** (DSP technology)



Battery life: **10 hours of conversation**



**USB programmable** (configure the device and update the firmware)



**Vocal messages:** provides vocal messages on the device status and battery charge



**Aerodynamic design**, just 18 mm thick



**Compatible with all helmet types**

### Bluetooth® connections:



**Mobile telephones/Mp3 with Bluetooth**



**GPS devices** (with **Background function** for GPS audio in the background as you speak)



**PMR446 radio with Bluetooth**

### Wire connections for rider and passenger devices:



**iPod/MP3 player stereo**



**PMR446 radio**

**Manual controls:** telephone, intercom and wire connection activation

Available: **single pack C1033**  
**twin pack C1033.01**

(Package contains: see table on p. 14)





Bluetooth technology **2.1**



**Midland BT City** for him and **BT Eva** with **Swarovsky** for her, the market's smallest "Rider-to-Passenger" intercoms.

"Bike-to-Bike" for 2 motorcyclists with a range of action of up to 200 m. Devoted to the most design-conscious bikers and scooterists in town.

### Intercom

up to 2 people



range of up to 200 m







Made with CRYSTALLIZED™  
– Swarovski Elements



For group communication with no limits to the number of users, **Midland BT City&Eva** can be used with Midland G8BT for communication at up to 12km



**Stereo music** with Play/Pause and Fast-forward/Rewind control



**Waterproof**



**Bluetooth® Wireless Technology 2.1 with DSP**



**Vox for voice activation** of the Intercom function and telephone response (hands-free)



**AGC technology** for automatic volume control



**USB programmable** (configure the device and update the firmware)



Battery life: **8 hours of conversation**



**Compatible with all helmet types**

### Bluetooth® connections:



**Mobile telephones/Mp3 with Bluetooth**



**GPS devices** (with **Background function** for GPS audio in the background as you speak)



**PMR446 radio with Bluetooth**

### Wire connections for rider and passenger devices:



**iPod/MP3 player stereo**



**PMR446 radio**

**Manual controls:** telephone, intercom and wire connection activation

Available:

#### Single pack

**BT City C929 - BT Eva C930**

#### twin pack

**BT City C929.01 - BT City&Eva C930.01**

(Package contains: see table on p. 14)



### Optional accessories: from the motorcycle to the ski slopes and bicycle (etc.)

#### BT Ski Audio Kit code C932

To use BT City & Eva with earwarmers on the ski slopes.

#### BT Ski Universal Kit code C1053

To use BT City & Eva with ski helmets.

#### BT Action Kit code C1030

To use BT City & Eva on bicycle helmets, climbing helmets, etc.





## BT REMOTE

Advanced remote control system

The **Midland BT Remote** is a Bluetooth® remote control able to manage **BT Next**, **BTX2** and **BTX1** functions from the handlebar.



**BT Next**



**BTX2**



**BTX1**



**Waterproof**



Easy to mount remove, it is a concentrated solution for technology, safety and function, **sulted for all handlebar types of all motorcycles.**



With the **BT Remote** you can activate and command all **functions of the Midland devices without taking your hands off the handlebar, thanks to 5 practical buttons**



**Standard mini USB recharging socket**

**Available in a single pack  
BT Remote - C1032**



# G8E-BT

For limitless group communication with built-in Bluetooth technology

**IPX5**  
WATERPROOF

## Main characteristics



Midland G8BT PMR446 Bluetooth transceiver, extends **communication between groups of motorcyclists with no limit to the number of users and a range of up to 12 km.**



**IPX5 certified, It is resistant to water, dust and impact.**



**Vox for voice activation, to communicate hands-free, adjustable on 3 levels**



Battery life:  
**12 hours with alkaline batteries**

8 channels + 16 pre-registered

Power supply: battery pack or 4 AAA batteries

Size: 58x110x32mm

**PTT on handle for manual activation**



## Handlebar mounting accessory KIT161

The optional accessory **KIT161** enables Midland G8 BT to be handlebar mounted.



**Available in a single pack**

G8E-BT - C975

## For car-motorcycle communication

### Two-way radio car kit code C982

Car kit with suction pad mount, 12V charger. Conversations can take place in Vox mode or with the shoulder microphone included in the pack. **Compatible with Midland G7XT, G8, G8 BT and G9.**





# BT line technical characteristics

BT NEXT

BT X2

BT X1

BT CITY & EVA

FUNCTIONS				
INTERCOM	<ul style="list-style-type: none"> <li>• <b>6 people</b> Bike-to-Bike, Rider/ Passenger</li> <li>• <b>2 TALK2ALL connections</b></li> <li>• Maximum distance <b>1.6 km</b></li> <li>• Voice activation (VOX) and/or with button</li> </ul>	<ul style="list-style-type: none"> <li>• <b>3 people</b> Bike-to-Bike, Rider-to-Passenger</li> <li>• <b>1 TALK2ALL connection</b></li> <li>• Maximum distance <b>800 m</b></li> <li>• Voice activation (VOX) and/or with button</li> </ul>	<ul style="list-style-type: none"> <li>• 2 people Rider-to-Passenger</li> <li>• <b>1 TALK2ALL connection</b></li> <li>• Maximum distance <b>10 m</b></li> <li>• Voice activation (VOX) and/or with button</li> </ul>	<ul style="list-style-type: none"> <li>• <b>2 people</b> Bike-to-Bike, Rider/Passenger</li> <li>• Maximum distance <b>200 m</b></li> <li>• Voice activation (VOX) and/or with button</li> </ul>
TELEPHONE	<ul style="list-style-type: none"> <li>• Incoming call alert</li> <li>• Voice answer (Vox)</li> <li>• Voice-activated call</li> <li>• Call last number</li> <li>• Refuse call</li> </ul>	<ul style="list-style-type: none"> <li>• Incoming call alert</li> <li>• Voice answer (Vox)</li> <li>• Voice-activated call</li> <li>• Call last number</li> <li>• Refuse call</li> </ul>	<ul style="list-style-type: none"> <li>• Incoming call alert</li> <li>• Voice answer (Vox)</li> <li>• Voice-activated call</li> <li>• Call last number</li> <li>• Refuse call</li> </ul>	<ul style="list-style-type: none"> <li>• Incoming call alert</li> <li>• Voice answer (Vox)</li> <li>• Voice-activated call</li> <li>• Call last number</li> <li>• Refuse call</li> </ul>
GPS	<ul style="list-style-type: none"> <li>• Audio Information from Bluetooth® GPS satellite navigator, also in the background</li> </ul>	<ul style="list-style-type: none"> <li>• Audio Information from Bluetooth® GPS satellite navigator, also in the background</li> </ul>	<ul style="list-style-type: none"> <li>• Audio Information from Bluetooth® GPS satellite navigator, also in the background</li> </ul>	<ul style="list-style-type: none"> <li>• Audio Information from Bluetooth® GPS satellite navigator, also in the background</li> </ul>
MUSIC	<ul style="list-style-type: none"> <li>• Hi-Fi stereo connection with Bluetooth® music player/mobile telephone/GPS</li> </ul>	<ul style="list-style-type: none"> <li>• Hi-Fi stereo connection with Bluetooth® music player/mobile telephone/GPS</li> </ul>	<ul style="list-style-type: none"> <li>• Hi-Fi stereo connection with Bluetooth® music player/mobile telephone/GPS</li> </ul>	<ul style="list-style-type: none"> <li>• Hi-Fi stereo connection with Bluetooth® music player/mobile telephone/GPS</li> </ul>
FM RADIO	<ul style="list-style-type: none"> <li>• <b>Built-in, with 6</b> radio station memories</li> </ul>			
CONNECTIONS				
BLUETOOTH®	<b>2 devices</b> of GSM, GPS, MP3, PMR446 with built-in Bluetooth.	<b>1 device</b> of GSM, GPS, MP3, PMR446 with built-in Bluetooth.	<b>1 device</b> of GSM, GPS, MP3, PMR446 with built-in Bluetooth.	<b>1 device</b> of GSM, GPS, MP3, PMR446 with built-in Bluetooth.
WIRE	iPod, MP3, PMR446	iPod, MP3, PMR446	iPod, MP3, PMR446	iPod, MP3, PMR446
GROUP COMMUNICATION	<ul style="list-style-type: none"> <li>• with PMR446 with built-in Bluetooth® (Midland G8 BT)</li> <li>• with wired PMR446</li> <li>• Maximum distance 12 km*</li> </ul>	<ul style="list-style-type: none"> <li>• with PMR446 with built-in Bluetooth® (Midland G8 BT)</li> <li>• with wired PMR446</li> <li>• Maximum distance 12 km*</li> </ul>	<ul style="list-style-type: none"> <li>• with PMR446 with built-in Bluetooth® (Midland G8 BT)</li> <li>• with wired PMR446</li> <li>• Maximum distance 12 km*</li> </ul>	<ul style="list-style-type: none"> <li>• with PMR446 with built-in Bluetooth® (Midland G8 BT)</li> <li>• with wired PMR446</li> <li>• Maximum distance 12 km*</li> </ul>
HANDLEBAR REMOTE CONTROL	compatible with Midland BT Remote	compatible with Midland BT Remote	compatible with Midland BT Remote	-
CHARACTERISTICS SHARED BY ALL MODELS				
<ul style="list-style-type: none"> <li>• Voice command (Vox) for activating the Intercom function and answering the telephone</li> <li>• Manual controls for telephone, intercom and wire connection activation</li> <li>• AGC technology for automatic volume control</li> <li>• Background function for GPS audio in the background as you speak</li> <li>• Polymer lithium batteries</li> <li>• USB wire programmable for firmware configuration and update</li> <li>• Vocal messages on the device status and battery charge (only Next Generation)</li> <li>• Compatible with all helmet types (jet, modular, full-face)</li> <li>• 2 mount types: on a slide support with clamp (removable) or adhesive slide support (fixed)</li> <li>• Audio kit consisting of 2 stereo speakers and 2 interchangeable microphones (on arm and wire)</li> </ul>				
PACKS				
All packages contain 2 type of interchangeable microphones (on arm and wire), 2 types of fixture: slide with clamp (removable) and adhesive slide support (fixed), audio kit with ultra-slim speakers and wall charger.				
SINGLE	C969	C1034	C1033	BT City C929 BT Eva C930
TWIN	C969.01	C1034.01	C1033.01	BT City C929.01 BT City&Eva C930.01

\* Depends on environmental and atmospheric conditions



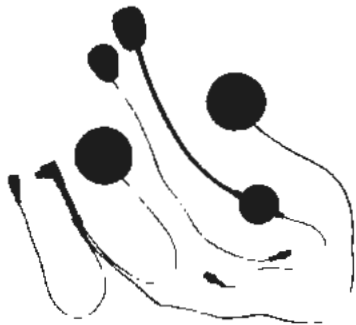
# BT line accessories



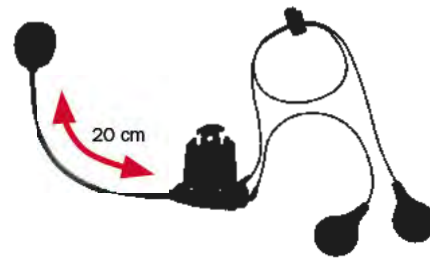
**BT Next Audio kit - C1008**  
 Standard stereo audio kit complete with speaker and 2 microphones (wire/arm)  
**Compatible with BT Next, BTX1, BTX2**



**BT City&Eva external mike clamp - C978**  
 Bi-adhesive helmet mounting system with arm microphone  
**Compatible with BT City&Eva**



**BT2 Audio kit - C893**  
 Standard stereo audio kit complete with speaker and 2 microphones (wire/arm)  
**Compatible with BT2, BT1, BT Single**



**Clamp BT XL Dual Fix - C836.01**  
 Midland BT Intercom/Scala Rider Cardo audio kit. Helmet fixture (20 cm long) with bi-adhesive  
**Compatible with BT Intercom, BT Rider**



**BT City&Eva Audio kit - C938**  
 Standard stereo audio kit complete with speaker and 2 microphones (wire/arm)  
**Compatible with BT City&Eva**



**BT Next Mounting kit - C1009**  
 Twin helmet mounting kit with clamp base and bi-adhesive base  
**Compatible with BT Next, BTX1, BTX2**



**HI-FI Speaker - C895**  
 High performance HI-FI speakers  
**Compatible with BT2, BT1, BT Single**



**BT City&Eva Mounting kit - C937**  
 Twin helmet mounting kit with clamp base and bi-adhesive base  
**Compatible with BT City&Eva**



**BT2 Mounting kit - C898**  
 Twin BT2 helmet mounting kit with clamp base and bi-adhesive base  
**Compatible with BT2, BT1, BT Single**





**Emergency Charger - C920**

Emergency charger. In the event of emergency or flat battery, the emergency charger enables the various BT line models, Midland Action video cameras, devices with MiniUSB sockets and a great many different mobile telephone models to be recharged using the adapter cables provided



**AI 12 V - C894**

12 V travel charger for the BT line



**MW BT - C1057**

Double BT line USB wall charger



**BT Ski Audio Kit - C932**

BT City/Eva stereo headphones (earwarmer type) with microphone and Velcro strap to fasten to the helmet. This kit enables the BT City&Eva to be used on the ski slopes



**BT Ski Universal Kit - C1053**

Kit for the installation of BT City&Eva on skiing helmets. Consists of stereo speaker and built-in arm-mounted microphone, Velcro strap and bi-adhesive clamp for fastening to the helmet



**BT Action Kit - C1030**

Kit for the installation of BT City&Eva on bicycle/ climbing helmets, etc. or to use them without helmets. Consists of rotating collar, Velcro strap and single earpiece.



# BT intercom-transceiver connection kit



## Kit 128 - 2-pin radio

Complete kit for connection with 2-pin radio with PTT (for Midland G6, G6 XT, series G7, G8, G9).

Includes: BHS300U+BT312

Compatible with the BT line



BHS300U  
BHS301

BT312

## Kit 129 - 1-pin radio

Complete kit for connection with 1-pin radio with PTT (for Midland 777, Midland G5 and G5 XT).

Includes: BHS301+BT312

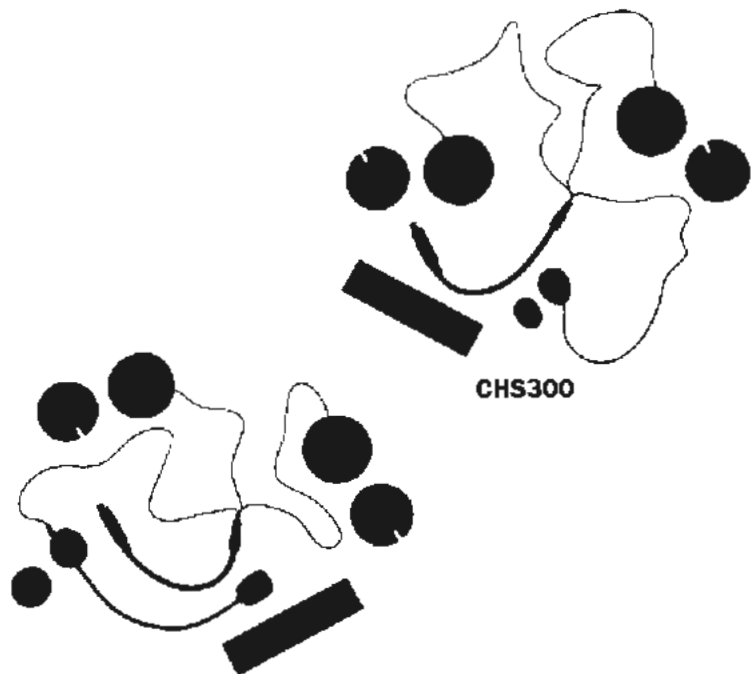
Compatible with the BT line

# Kit for the use of transceivers on the motorcycle

## KIT 130 (rider) - 2-pin radio

Complete microphone/speaker kit with PTT for 2-pin radio connection (Midland G7, Midland G8) for full-face, jet and modular helmets.

Includes: CHS300+OHS500+BHS300N



CHS300

OHS500

## KIT 131 (rider) - 1-pin radio

Complete microphone/speaker kit with PTT for 1-pin radio connection (Midland 777) for full-face, jet and modular helmets.

Includes: CHS300+OHS500+BHS301



BHS303

BHS300N  
BHS301

## KIT 132 (passenger) - G8 radio

Complete microphone/speaker kit for full-face, jet and modular helmets.

Includes: CHS300+OHS500+ BHS303



## Wired solutions In single pack

### CHS300 - code C802

Microphone/speaker for full-face helmet

### OHS550 - code C801

Microphone/speaker with internal armband

### OHS500 - code C800

Microphone/speaker with external armband

### BHS300N - code 41940

**BHS300U - code 41939** (for BT line)

Adapter cable for 2-pin radio with PTT

### BT 312 - C905

Adapter cable to connect the radio to a Midland BT intercom.

Match with a BHS300U or BHS301 cable

### BHS301- code C798

Adapter cable for 1-pin radio with PTT

### BHS303 - code C799

Adapter cable for passenger intercom socket

### EXT300 - code C853

2m spiral extension cable

#### How to choose the right cable:

First choose the type of microphone/earpiece best suited to your helmet (CHS300, OHS550 or OHS500).

Then choose the adapter lead (BHS300N/U, BHS301) according to your radio's accessory socket (1-pin or 2-pin).

The **BHS303 adapter cable** is exclusively for connecting the passenger to radio equipment fitted with intercom sockets, such as the Midland G8. The BHS303 cable should be matched to a microphone speaker (CHS300, OHS550, OHS500). Bike-to-Bike and Rider-to-Passenger communication takes place by pressing the PTT button.



### SHS300 - code C852

Stereo headphones for iPod/MP3 for full-face and jet helmets with 3.5 mm/2.5 mm adapter



### MA 46 - C660

Motorcycle rider kit consisting of microphone/speaker to be matched to a 2-pin transceiver for bike-to-bike communication. Equipped with a handlebar PTT button to activate transmission.

Use the Midland G8 and the passenger **KIT 132** to connect the passenger.



**BPA 200**

### BPA 200 - C900

#### Bluetooth adapter for transceivers

When **PBA200** is connected to a transceiver, wireless Bluetooth accessories can be used (such as mobile telephone earpieces and Bluetooth motorcycle intercoms). Built-in PTT button, completely waterproof. **PBA200 is compatible with: all Alan or Midland devices with 2-pin sockets.**





## Midland 777

PMR446 transceiver

The **Midland 777 transceivers** enable free conversation with your travel companions within a range of up to 5 km. **All products of the Midland BT Line Intercom range can be cable matched to Midland 777.**

### Characteristics

- › PMR446 8/LPD 69
- › 38 CTCSS tones
- › Keypad lock/Vibracall/Dual Watch/Call/Scan/Monitor/Roger beep (end of call tone)
- › Auto power save: automatic battery saving
- › Flat battery indicator
- › Vox adjustable to 2 levels,
- › High/low power
- › Power supply: 650 mA lithium battery pack
- › 1-pin 2.5 mm stereo accessory socket

### Packs and Codes

#### Transparent blister:

2 radios, twin tabletop charger, twin wall charger, 2 650 mAh lithium batteries, belt clip, neck cords

**Dual band version black code C724.19**

**Dual band version white code C724.21**

#### Limited edition:

Metal case containing 2 radios, 2 earpiece microphones, twin tabletop charger, twin wall charger, 2 650 mAh lithium batteries, belt clip, neck cord

**Dual band version black code C724.20**





## Midland Action Camera

The **mini video cameras** that combine a sophisticated technological heart with incredible **ease of use**.

The choice of **motorcycle professionals**, teams and enthusiasts.

To record incredible videos on unmade roads, during training sessions and **capture the experiences you have on your bike**.





**Full HD  
1080**

REAL full HD for motorsports.  
Supplied with all accessories for  
motorcycle and helmet mounting

### Packs and Codes

1 video camera, Micro SD card reader, ski mask installation kit, bicycle helmet installation kit, helmet installation kit, handlebar installation kit, side mount, underwater case waterproof to 30 m, flat lens for underwater filming, 1100 mAh lithium battery, USB lead, wall and car charger.

**Code C994 Black**



## XTC-300 FULL HD

**Resolution:** HI1920x1080, M1280x720, L848x480

**Frame rate:** HD 30/L-M 60 fps

**Viewing angle:** HD127° / M140° / L170°

### Pack contains



Ski mask mount



Helmet mount



Velcro band for bicycle helmet



Mount for bicycle and motorcycle handlebars



Side mount



Waterproof case

### Technical characteristics XTC300/350

Control	A single On-Off/REC command
Resolution	Hi: 1920x1080 Mid: 1280x720 Low: 848x480
Image stabiliser	Dynamic digital
FPS frame rate	30 HD - 60 Mid-Low
Visual	127° HD - 140° Mid - 170°Low

Max. memory card capacity	Micro SD up to 32GB
Power supply	1100mAh Lithium (2.5-3h)
Size WxDxH	95x30.3x50 mm
Weight	110 g
Recording time (2GB)	30' Hi - 26' Mid - 40' Low
Video format	H.264 (MP4)
Operating system compatibility	Win XP, SP2, Vista & 7, Mac OSX 10.4+







**Full HD  
1080**



## XTC-350 FULL HD

**Resolution:** H1920x1080, M1280x720, L 848x480,  
**Frame rate:** HD 30/L-M 60 fps  
**Viewing angle:** HD127° / M140° /L170°

Full HD Mossy Oak devoted to outdoor sports lovers.  
The XTC-350 is equipped with "stealth" technology to silence the video camera



### Packs and Codes

1 video camera, Micro SD card reader, helmet installation kit, handlebar and gun installation kit, cap mount, bow and shaft mount, side mount, waterproof case, 1100 mAh lithium battery, USB lead, wall and car charger.

**Code C994.02**

**Technical characteristics**, see previous page

### Pack contains



Bicycle and motorcycle handlebar mount



Cap mount



Bow and shaft mounts



Side mount



Waterproof case



Small and compact, it is the perfect blend of performance and convenience, for incredible HD video quality. Supplied with all accessories for motorcycle and helmet mounting



**HD**  
ready

**Technical characteristics**

Control	A single On-Off/REC command
Resolution	HD:1280x720 SD: 640x480
Image stabiliser	Dynamic digital
FPS frame rate	30 HD - 60 Low
Visual	140°
Max. memory card capacity	Micro SD up to 32GB
Power supply	900mAh Lithium (3h)
Size WxDxH	85.2 x 30.3 x 42.2 mm
Weight	93 g
Recording time (2GB)	26' HD - 38' SD
Video format	H.264 (MP4)
Operating system compatibility	Win XP, SP2, Vista & 7, Mac OSX 10.4+

**XTC-200 HD**

**Resolution:** HD 1280x720, L 640x480 pixel  
**Frame rate:** HD 30/L 60 fps  
**Viewing angle:** 140°

**Packs and Codes**

1 video camera, Micro SD card reader, ski mask installation kit, bicycle helmet installation kit, helmet installation kit, handlebar installation kit, side mount, underwater case waterproof to 30 m, 3.7 V 900 mAh lithium battery, USB lead, wall and car charger.

**Code C985 black and metallic grey**

**Pack contains**



Ski mask mount

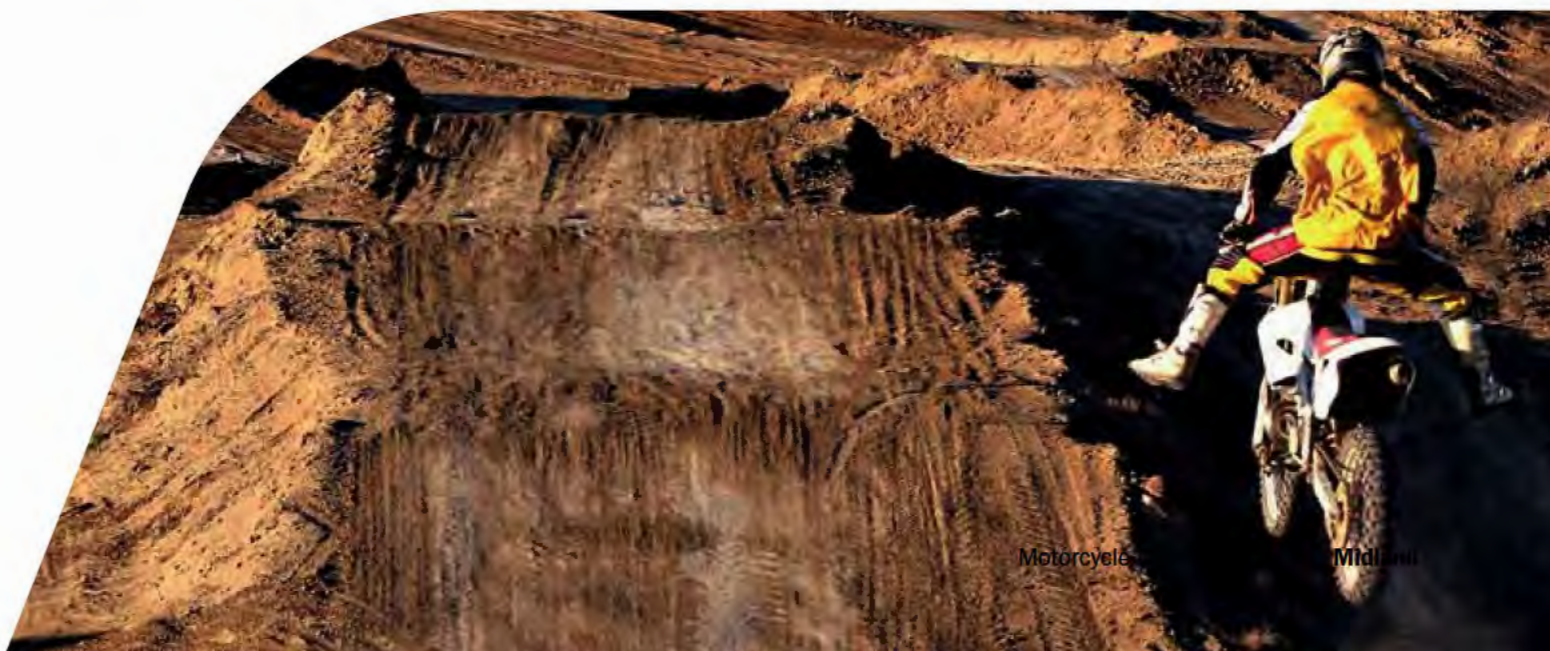
Helmet mount

Velcro band for bicycle  
Helmet

Mount for bicycle and  
motorcycle handlebars

Side mount

Waterproof case







**2.0Gb**  
memory

## XTC-100 XTC-100 Mimetic

**Resolution:** 640x480 pixel,  
**Frame rate:** 30 fps  
**Viewing angle:** 140°

The most practical mini Plug and Play camera with memory card and batteries already charged. Ready for immediate use! Supplied with all accessories for motorcycle and helmet mounting

### Technical characteristics

Control	A single On-Off/REC command
Resolution	640x480
Image stabiliser	Dynamic digital
FPS frame rate	30
Visual	140°
Max. memory card capacity	Micro SD up to 32GB
Power supply	2 x AAA (2h)
Size WxDxH	85.2 x 30.3 x 42.2 mm
Weight	93 g
Internal memory	25"
Recording time (2GB)	30'
Video format	AVI
Operating system compatibility	Win XP, SP2, Vista & 7, Mac OSX 10.4+



**2.0Gb**  
memory

### Packs and Codes

1 video camera, 2 GB micro SD card, ski mask installation kit, bicycle helmet installation kit, helmet installation kit, handlebar installation kit, side mount, 2 alkaline AAA batteries, USB lead

**Code C968 Black**

**Code C968.02 Camouflage version (Mossy Oak®)**

### Pack contains



Ski mask mount



Helmet mount



Velcro band for bicycle helmet



Side mount



Bicycle and motorcycle handlebar mount



# Accessories



**RAM Magnetic Mount - C1041**  
Professional magnetic mount for metal surfaces. For non-permanent but safe mounting on appropriate motorcycle tanks



**RAM Roll Bar Mount - C1042**  
Professional mount for assembly onto tubular handlebar with a diameter of between 1 and 3 cm



**RAM Moto Quad Mount - C1052**  
Professional mount suitable for all vehicles with tubular



**Surf Snowboard Mount - C1038**  
Adjustable support with safety device for mounting on a surf/snowboard



**Head Strap Mount - C1040**  
Mount/strap to fasten the video cameras straight onto your head



**Picatinny - C1039**  
Mount for rifles and pistols pre-prepared with Picatinny Rail



**Car Mounting XTC - C980**  
Suction pad mount for cars. Enables stable filming from a vehicle



**Cap Mount XTC - C1012**  
Cap mount





**C990**  
Bi-adhesive helmet mount



**C989**  
Ski mask mount



**C991**  
Velcro band for bicycle helmet



**C992**  
Mount for bicycle and motorcycle handlebars



**C1015**  
900mAh lithium battery for XTC200



**C1014**  
1100mAh lithium battery for XTC300



**Waterproof Case CC-XTC - C976**  
(for XTC100/200 HD)  
Waterproof case to 30 m.



**Waterproof Case CC-XTC300 - C1031**  
Waterproof case with flat lens for diving down to 30 m.



**R73094**  
Flat lens kit for CC-XTC300 case, specifically designed for diving.





## POP materials



### Midland Moto display unit code A121.01

Free-standing display unit with 12 hooks + anti-shoplifting supports and customised graphics (does not include the packages shown)  
Size: 40x40x175 cm



### Midland Digital Frame code C1011

With the presentation video clips of the Next Generation and Midland XTC series mini cameras pre-loaded. 2 GB internal memory. Possibility of adding other video clips.  
Size: 21.5x17 cm (8")



### Midland Demo Kit 157 Moto

Plexiglass display unit with specific Midland Moto graphics (21 x 30.5 cm). Includes pair of headphones with microphone to demo test the whole Midland BT line.

### Midland Plexi Display code A049

Plexiglas display unit

### Moto graphics for Plexi Display code 604026

Plexi display size: 21x16x30.5 cm



For technical data and Information on how to use the products:  
+39 0522 509446 - [Infomoto@cte.it](mailto:Infomoto@cte.it)



Motovacanze.it: Gorges du Dades - Morocco 2009



Cte International srl, Via R. Sevardi 7, 42124 Reggio Emilia - Italy  
• Tel. +39 0522 509445 • Fax +39 0522 509448 • [www.midlandradio.eu](http://www.midlandradio.eu)

We would like to thank the "Motovacanze" association for the images of motorcycle travel - Printed April 2012-604072