



# MARINE PRODUCTS 2013

Simply the Best



## COMPANY PROFILE

### ICOM, THE WIRELESS COMMUNICATION EXPERTS

Icom Inc. is a company located in Osaka, Japan, and is a manufacturer of wireless communication products. Since Icom's establishment in 1954, Icom has had a long record as a trusted manufacturer of land mobile radio, amateur radio, marine radio and navigation products, and aviation radio and communications receivers.



## QUALITY & RELIABILITY

### ICOM QUALITY AND ICOM RELIABILITY

Over 50 years of engineering and production excellence is a part of every Icom product. Using the latest equipment, Icom radios are tested to pass rigorous in-house tests as well as environmental tests to the US Military standard 810 specifications. Icom's products are also compliant with the European RoHS directive.



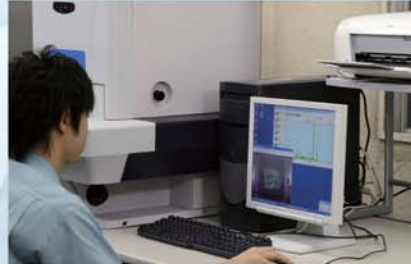
Dust Protection



Air Leak Test



Vibration



X-ray inspection



Transit Drop Test

## PRODUCTION

### MADE IN JAPAN QUALITY

Icom is a rare example of an electronics manufacturer that has not shifted production to lower cost countries, but kept its production base in Japan. The Wakayama Icom plant has an advanced production system to produce small volume/multi-model wireless communication products.



## ICOM BRAND

### ICOM, WORLD BRAND NAME

Icom has long been recognized as a reliable marine radio brand name around the world. Our marine radios are used by recreational and commercial boaters to professional organizations world wide. In fact, Icom marine radios have received "Best Radio" NMEA awards for more than 22 times in the United States alone.



## NETWORK

### ICOM'S WORLDWIDE NETWORK

Icom products are sold in over 100 countries in the World. Icom has an international sales and service network, including sales subsidiaries in the US, Australia, Germany, Spain, Taiwan and Brazil. Icom is here to support and service our products and your communication needs.





# VHF Handheld Transceivers



### Supplied Accessories

- Battery pack, BP-275
- Battery charger, BC-204
- AC adapter, BC-147SE\*
- Belt clip, MB-109
- Antenna, FA-SC59V
- Hand strap
- \* May differ or not supplied, depending on version.



### Supplied Accessories

- Battery pack, BP-245H/N
- Battery charger, BC-210
- AC adapter, BC-123SE\*
- Belt clip, MB-103
- Antenna, FA-S64V\*
- Cigarette lighter cable, CP-25H\*
- Hand strap
- \* May differ or not supplied, depending on version.

## VHF MARINE TRANSCEIVER IC-M91D

The World's First Active Noise Cancelling Handheld with DSC, GPS and MOB



### FEATURES

- New intuitive user interface and high definition dot-matrix display
- Active noise cancelling reduces background noise by up to 90%
- Built-in GPS with GPS compass
- Built-in DSC for handheld
- MOB and waypoint memories

- Dual watch and Tri-watch functions
- Instant access to Ch 16 and call channel
- AquaQuake™ draining function
- Auto power save
- Priority and normal scan
- Tag scan and favorite channel function
- Optional speaker-microphone, HM-167/HM-202

## VHF MARINE TRANSCEIVER IC-M73EURO PLUS

Slim, Stylish, Powerful VHF with Professional Features



### FEATURES

- Last call voice recording\*
- Active noise cancelling\* reduces background noise by up to 90%
- Bass Boost Function\*
- IPX8 advanced waterproofing
- 6W RF output, 700mW loud audio
- 17 hours of long lasting operating time with BP-245H

\* Basic version (no voice recorder, no noise canceller and no bass boost function) available for limited markets.

- Dual watch and Tri-watch functions
- Instant access to Ch 16 and call channel
- AquaQuake™ draining function
- Auto power save
- Priority and normal scan
- Tag scan and favorite channel function
- Optional speaker-microphones, HM-167/HM-202



# VHF Handheld Transceivers



### Supplied Accessories

- Battery pack, BP-266
- Battery charger, BC-199SE\*
- Belt clip, MB-124
- Antenna, FA-SC58V
- Hand strap
- \* May differ or not supplied, depending on version.

## VHF MARINE TRANSCEIVER IC-M23

**FLOAT' N FLASH, Small and Lightweight Floating VHF Marine**



### FEATURES

- **FLOAT' N FLASH**
- Energy-saving 3.7V circuitry
- Volume boost and mute functions
- Direct charging circuitry
- 10 hours of operating time

- Dual watch and Tri-watch functions
- Instant access to Ch 16 and call channel
- AquaQuake™ draining function
- 2-step power save
- Auto scan function
- Tag scan and favorite channel function



### Supplied Accessories

- Battery pack, BP-252
- Battery case, BP-251\*
- Battery charger, BC-173
- AC adapter, BC-147SE\*
- Belt clip, MB-109
- Antenna, FA-SC58V
- Hand strap
- \* May differ or not supplied, depending on version.

## VHF MARINE TRANSCEIVER IC-M35

**“Clear Voice Boost”, and it Floats**



### FEATURES

- Noise cancelling microphone
- Automatic volume adjustment
- Voice boost and mute functions
- Large buttons and slim dimensions
- 6W RF output, 700mW loud audio

- Dual watch and Tri-watch functions
- Instant access to Ch 16 and call channel
- AquaQuake™ draining function
- 2-step power save
- Auto scan function
- Tag scan and favorite channel function
- Optional speaker-microphone, HM-165



### Supplied Accessories

- Battery pack, BP-274/BP-227
- Battery charger, BC-152N
- AC adapter, BC-147SE\*
- Belt clip, MB-86
- Antenna, FA-S59V
- Hand strap
- \* May differ or not supplied, depending on version.

## VHF MARINE TRANSCEIVER IC-M87

**Compact Size for Professional Use**



### FEATURES

- Tough and compact body
- Marine and land channel groups
- 22 programmable land channels
- Built-in CTCSS and DTCS tones

- Dual watch and Tri-watch functions
- Instant access to Ch 16 and call channel
- Auto power save
- Auto scan function
- Tag scan function
- Optional speaker-microphone, HM-168



# VHF & UHF Handheld Transceivers



### Supplied Accessories

- Battery pack, BP-227AX
- Battery charger, BC-152N
- AC adapter, BC-147SE\*
- Belt clip, MB-86
- Antenna, FA-S59V
- Hand strap
- \* Not supplied depending on version.

## VHF MARINE TRANSCEIVER

# IC-M87 ATEX

ATEX Intrinsically Safe Marine Radio



### FEATURES

- ATEX intrinsically safe type approval (Approved classes: II2G Ex ib IIA T3 Gb)
- Tough and compact body
- Marine and land channel groups
- 22 programmable land channels
- Built-in voice scrambler
- Dual watch and Tri-watch functions
- Instant access to Ch 16 and call channel
- Auto power save
- Auto scan function
- Tag scan function
- Optional speaker-microphone, HM-138



### Supplied Accessories

- Battery pack, BP-252
- Battery charger, BC-173
- AC adapter, BC-147SE
- Belt clip, MB-103Y
- Neck strap

## SURVIVAL CRAFT 2-WAY RADIO

# IC-GM1600E

GMDSS Portable for Survival Craft



### FEATURES

- Meets strict environmental requirements for GMDSS
- 2W output power for long lasting battery
- Primary (non-rechargeable) lithium battery pack, BP-234
- Highly visible yellow colored body
- Instant access to Ch 16 and call channel
- Auto power save
- 4-step battery indicator



### Supplied Accessories

- Battery pack, BP-274/BP-227
- Belt clip, MB-98
- Antenna, FA-S27U
- Hand strap

## UHF ONBOARD TRANSCEIVER

# IC-F61M









Compact, waterproof onboard radio












### FEATURES

- UHF onboard communication (Meets EN 300 720-2 requirements)
- IP67, dust-tight and waterproof
- 700mW audio output power
- Vibration alert function
- 8 minutes voice recorder
- 5-Tone, CTCSS, DTCS built-in
- Optional waterproof microphone, HM-169
- BTL only version (no vibration alert and no voice recorder) and BTL/Vibration alert version (no voice recorder) available\* \* Not available in some countries.

# Options

MODEL NAME	BATTERY CASES		BATTERY PACKS						
	BP-226 LR6 (AA)×5 cells	BP-251*1 LR03 (AAA)×5 cells	BP-227 (Li-Ion) 7.4V/1850mAh (min.) 1950mAh (typ.)	BP-227AX (Li-Ion) 7.4V/1850mAh (min.) 1950mAh (typ.)	BP-234 (Lithium) 9.0V/3300mAh (non-rechargeable)	BP-245H (Li-Ion) 7.2V/2150mAh (min.) 2200mAh (typ.)	BP-252 (Li-Ion) 7.4V/950mAh (min.) 980mAh (typ.)	BP-266 (Li-Ion) 3.7V/1500mAh (min.) 1590mAh (typ.)	BP-274 (Li-Ion) 7.4V/1800mAh (min.) 1900mAh (typ.)
IC-M91D									
IC-M73EURO						✓			
IC-M23								✓	
IC-M35		✓					✓		
IC-M87	✓		✓						✓
IC-M87ATEX				✓					
IC-GM1600E					✓ (For survival craft)		✓ (On-board use only)		
IC-F61M	✓		✓						✓

\*1 The IC-M35 floats when used with most common brand AAA batteries. Battery weight varies by manufacturer. Please check your IC-M35 for buoyancy in a shallow area first when using AAA batteries.

MODEL NAME	BATTERY PACKS	DESKTOP CHARGERS							
	BP-275 (Li-Ion) 7.4V/1500mAh (min.) 1590mAh (typ.)	BC-119N Rapid charger	BC-152N Regular charger	BC-162 Rapid charger	BC-173 Regular charger	BC-190 Rapid charger	BC-204 Regular charger	BC-205 Rapid charger	BC-210 Rapid charger
IC-M91D									
IC-M73EURO	✓						✓	✓	
IC-M23		✓ (Use with AD-123)							✓
IC-M35				✓	✓				
IC-M87		✓ (Use with AD-100)	✓						
IC-M87ATEX		✓ (Use with AD-100)	✓						
IC-GM1600E					✓ (On-board use only)				
IC-F61M		✓ (Use with AD-100)	✓			✓			

MODEL NAME	MULTI-CHARGERS		AC ADAPTERS				WALL CHARGER	CHARGER ADAPTERS
	BC-121N Rapid charger	BC-197 Rapid charger	BC-123S*2 12V/1A	BC-145S*2 16V/0.93A	BC-147S*2 12V/200mA	BC-157S 12V/6.6A	BC-199S*2 Regular charger	AD-100 AD-123 AD-124*3 AD-129*3
IC-M91D								
IC-M91D		✓ (Use with AD-124)	✓ (Use with BC-205)		✓ (Use with BC-204)	✓ (Use with BC-197)		Photo shows AD-100 ✓ (Use AD-124 with BC-197)
IC-M73EURO		✓ (Use with AD-129)	✓ (Use with BC-210)			✓ (Use with BC-197)		✓ (Use AD-129 with BC-197)
IC-M23	✓ (Use with AD-123)			✓ (Use with BC-119N)		✓ (Use with BC-121N)	✓	✓ (Use AD-123 with BC-119N/121N)
IC-M35				✓ (Use with BC-162)	✓ (Use with BC-173)			
IC-M87	✓ (Use with AD-100)			✓ (Use with BC-119N)	✓ (Use with BC-152N)	✓ (Use with BC-121N)		✓ (Use AD-100 with BC-119N/121N)
IC-M87ATEX	✓ (Use with AD-100)			✓ (Use with BC-119N)	✓ (Use with BC-152N)	✓ (Use with BC-121N)		✓ (Use AD-100 with BC-119N/121N)
IC-GM1600E					✓ (Use with BC-173, On-board use only)			
IC-F61M	✓ (Use with AD-100)		✓ (Use with BC-190)	✓ (Use with BC-119N)	✓ (Use with BC-152N)	✓ (Use with BC-121N)		✓ (Use AD-100 with BC-119N/121N)

\*2 BC-123/BC-145/BC-147/BC-199SA for 120V AC. SE for 230V AC. SV for 240V AC. \*3 Either AD-124 or AD-129 is supplied with BC-197, depending on version.

✓ : Applicable    □ : Not applicable

Some options may not be available in some countries. Please ask your dealer for details.

# Options

MODEL NAME	CIGARETTE LIGHTER CABLES			DC POWER CABLES		SPEAKER MICROPHONES			
	CP-23L	CP-24	CP-25/H	OPC-515L	OPC-656	HM-138 Waterproof	HM-165 Waterproof	HM-167 Waterproof	HM-168 Waterproof
IC-M91D	✓ (Use with BC-205)		✓ (Use CP-25 with BC-204)	✓ (Use with BC-205)	✓ (Use with BC-197)			✓	
IC-M73EURO			✓ (Use CP-25H with BC-210)	✓ (Use with BC-210)	✓ (Use with BC-197)			✓	
IC-M23		✓							
IC-M35							✓		
IC-M87	✓ (Use with BC-119N)			✓ (Use with BC-119N)	✓ (Use with BC-121N)	✓			✓
IC-M87ATEX						✓			
IC-GM1600E									
IC-F61M	✓ (Use with BC-119N)			✓ (Use with BC-119N)	✓ (Use with BC-121N)	✓			✓

MODEL NAME	SPEAKER MICROPHONES		HEADSETS			VOX/PTT CASE	BELT CLIPS	
	HM-169 Waterproof	HM-202 Waterproof	HS-94 Earhook type with boom microphone	HS-95 Behind-the-head type	HS-97 Throat microphone type	VS-1SC	MB-86 Swivel type	MB-98 MB-103/103Y MB-109 MB-124 Alligator
IC-M91D		✓						✓ (Use MB-109)
IC-M73EURO		✓					✓	✓ (Use MB-103)
IC-M23								✓ (Use MB-124)
IC-M35								✓ (Use MB-109)
IC-M87							✓	✓ (Use MB-98)
IC-M87ATEX							✓	✓ (Use MB-98)
IC-GM1600E								✓ (Use with MB-103Y)
IC-F61M	✓		✓ (Use with VS-1SC)	✓ (Use with VS-1SC)	✓ (Use with VS-1SC)	✓	✓	✓ (Use MB-98)

MODEL NAME	LEATHER BELT HANGERS		ANTENNAS	
	MB-96N Swivel type	MB-96F Fixed type	FA-S59V FA-S64V FA-SC58V FA-SC59V FA-S27U Regular type	FA-S57US Stubby antenna (450-490MHz)
IC-M91D		✓	FA-SC59V	
IC-M73EURO	✓	✓	FA-S59V or FA-S64V	
IC-M23			FA-SC58V	
IC-M35			FA-SC58V	
IC-M87	✓	✓	FA-S59V	
IC-M87ATEX		✓	FA-S59V	
IC-GM1600E			Fixed type	
IC-F61M	✓	✓	FA-S27U	✓

✓ : Applicable

□ : Not applicable

Some options may not be available in some countries. Please ask your dealer for details.



# Specifications

	IC-M91D	IC-M73EURO	IC-M23	IC-M35
<b>Frequency range (Unit: MHz)</b>	Tx: 156.000–161.450 Rx: 156.000–163.425	Tx: 156.000–161.450 Rx: 156.000–163.425	Tx: 156.000–161.450 Rx: 156.000–163.425	Tx: 156.000–161.450 Rx: 156.000–163.425
<b>Dimensions (projections not included; WxHxD)</b>	61.2x141.4x43.2 mm	52.5x125x30 mm	58.5x128.5x34.5 mm	62x139.5x43 mm
<b>Weight (approx.)</b>	318g (With BP-275, FA-SC59V, and MB-109)	320g (With BP-245H, MB-103 and FA-S64V)	260g (With BP-266, MB-124 and FA-SC58V)	295g (With BP-252, MB-109 and FA-SC58V)
<b>Current drain</b>	<b>Transmit (High)</b> <b>Max. audio</b>	<b>Transmit (High)</b> <b>Max. audio</b>	<b>Transmit (High)</b> <b>Max. audio</b>	<b>Transmit (High)</b> <b>Max. audio</b>
	1.5A typical 500mA typ. (Internal SP)	1.5A typical 250mA typ. (External SP) 450mA typ. (Internal SP)	2.3A typical (at 3.7V DC) 350mA typical	1.5A typical 200mA typ. (External SP) 300mA typ. (Internal SP)
<b>Sensitivity (at 20dB SINAD; emf)</b>	-4dBμ typical	-4dBμ typical	-4dBμ typical	-2dBμ typical
<b>Intermodulation rejection</b>	68dB	68dB	68dB	68dB
<b>Audio output power (10% dist./ 8Ω load)</b>	200mW (External SP) 700mW typ. (Internal SP @ 1kHz)	200mW (External SP) 700mW typ. (Internal SP @ 1kHz)	200mW (Internal SP) 600mW typ. (Internal SP @ 1kHz)	200mW (External SP) 700mW typ. (Internal SP @ 1kHz, 16Ω)
<b>RF output power</b>	5/1W	6/3/1W 1/0.5W (German version)	5/1W (approx.) 1/0.5W (German version)	6/1W (With BP-252) 1/0.5W (German version)
<b>Operating time (approx.)*</b>	8 hours (with BP-275)	17 hours (with BP-245H)	10 hours (with BP-266)	8 hours (with BP-252)
<b>Waterproof protection</b>	IPX7 (1m depth/30 min.)	IPX8 (1.5m depth/30 min.)	IPX7 (1m depth/30 min.)	IPX7 (1m depth/30 min.)

Measurements made in accordance with EN 301 178. \* Typical operation, Tx:Rx:Stand-by=5:5:90

	IC-M87	IC-M87ATEX	IC-GM1600E	IC-F61M
<b>Frequency range (Unit: MHz)</b>	Tx: 156.000–161.450 Rx: 156.000–163.425 Tx/RX: 146-174 (PMR)	Tx: 156.000–161.450 Rx: 156.000–163.425 Tx/RX: 146-174 (PMR)	Tx/Rx: 156.300–156.875	Tx/Rx: 457.525–467.575 (25kHz channel spacing)
<b>Dimensions (projections not included; WxHxD)</b>	62x97x37.8 mm	62x97x39 mm	65x145x44 mm	56x97x35.2 mm
<b>Weight (approx.)</b>	274g (With BP-274)	280g (With BP-227AX)	385g (With BP-234)	278g (With BP-274)
<b>Current drain</b>	<b>Transmit (High)</b> <b>Max. audio</b>	<b>Transmit (High)</b> <b>Max. audio</b>	<b>Transmit (High)</b> <b>Max. audio</b>	<b>Transmit (High)</b> <b>Max. audio</b>
	1.6A typical 200mA typical	0.7A typical 200mA typical	1.0A/0.7A (2W/1W) 200mA	1.0A typ. (2W output) 300mA (External SP) 500mA (Internal SP)
<b>Sensitivity (at 20dB SINAD; emf)</b>	-2dBμ typical (Marine) -4dBμ typical (PMR)	-2dBμ typical (Marine) -4dBμ typical (PMR)	-2dBμ typical	-4dBμ typical
<b>Intermodulation rejection</b>	68dB (Marine) 65dB (PMR)	68dB (Marine) 65dB (PMR)	68dB	70dB typical
<b>Audio output power (10% dist./ 8Ω load)</b>	200mW (External SP) 350mW typ. (Internal SP @ 1kHz)	200mW (External SP) 350mW typ. (Internal SP @ 1kHz)	200mW (External SP) 350mW typ. (Internal SP @ 1kHz)	200mW (External SP) 700mW typ. (Internal SP @ 1kHz)
<b>RF output power</b>	5/3/1W (Marine/PMR) 1/0.5W (Marine, German)	1/0.5W (Marine) 1W (PMR)	2/1W	2/0.2W ERP
<b>Operating time (approx.)*</b>	15 hours (with BP-274)	19 hours (with BP-227AX)	Specified as IMO A.809 (19)	9 hours (with BP-274)
<b>Waterproof protection</b>	IPX7 (1m depth/30 min.)	IPX7 (1m depth/30 min.)	Specified as IMO A.809 (19)	IPX7 (1m depth/30 min.)

Measurements made in accordance with EN 301 178. EN 300 086 for IC-M87 PMR. IEC61097-12 for IC-GM1600E. EN 300 720 2 for IC-F61M.

\* Typical operation, Tx:Rx:Stand-by=5:5:90

## ATEX Intrinsically Safe versions

### Approved classes

CE0081 Ex  
II 2G Ex ib IIA T3 Gb

The approved rating is II 2G Ex ib IIA T3 Gb.

Special conditions for use: • Must be used with BP-227AX

Approved accessories: • Speaker-microphone HM-138

Either the jack cover or HM-138 must be attached to the connector.

**Please Note:** The optional chargers are not approved as intrinsically safe.

The battery should only be charged in non hazardous areas.

The battery should only be changed in non hazardous areas.

Ambient operating temperature: -20°C to +55°C

### Applicable gas and vapor types

Temp.	T1	T2	T3
Class	Acetone, Ethane, Ethylacetate, Ammonia, Benzene, Acetic acid, Carbon monoxide, Methanol, Propane, Toluene	Ethyl alcohol, i-amyl acetate, n-butan, n-butyl alcohol	Benzene, Diesel-fuel, Aviation-fuel, Heating-oils, n-hexane
IIA			

\* Please ensure the IC-M87 ATEX rating is acceptable for the intended place of use.





# VHF Fixed Mount Transceivers

VHF MARINE TRANSCEIVER

## IC-M423

### Easy-to-Use and Even Easier to Hear!



COMMANDMIC, HM-195B/SW capable

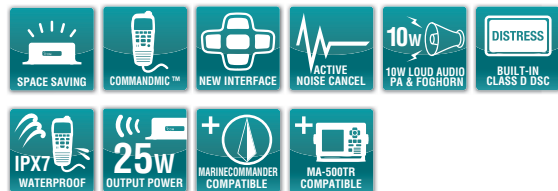
#### FEATURES

- New intuitive user interface and high definition dot matrix display
- Active noise cancelling reduces background noise by up to 90%
- 10W loud audio, public address and foghorn
- Optional COMMANDMIC™, HM-195B/SW
- IPX7 waterproof
- Dual watch and Tri-watch functions
- Instant access to Ch 16 and Call channel
- Tag scan and favorite channel functions
- AquaQuake™ draining function
- Auto scan function
- Display and keypad backlighting
- External speaker connection
- RX speaker function
- Black and super white color version

VHF MARINE TRANSCEIVER

## IC-M400BB

### Black Box Transceiver When Space is at a Premium



#### FEATURES

- Space Saving, Fully Functional VHF/DSC
- Controlled by COMMANDMIC™ HM-195B/SW\*
- New intuitive user interface
- Active noise cancelling reduces background noise by up to 90%
- 10W loud audio, public address and foghorn
- IPX7 waterproof
- Dual watch and Tri-watch functions
- Instant access to Ch 16 and Call channel
- Tag scan and favorite channel functions
- AquaQuake™ draining function
- Auto scan function
- Display and keypad backlighting
- External speaker connection
- RX speaker function

\* HM-195B/SW may be sold separately, depending on version.



## COMMANDMIC™

REMOTE-CONTROL MICROPHONE

## HM-195B/SW

### Full Control 2nd Station Capability for IC-M423 Remote-Controller head for IC-M400BB



#### FEATURES

- Full control 2nd station capability for IC-M423
- Remote-Controller head for IC-M400BB
- Intercom function with IC-M423
- New intuitive user interface
- Up to 18.3m (60.3ft) remote location installation\*  
\* Two optional OPC-1541 extension cables required
- Black and super white color version



Available in black or super white.



# VHF Fixed Mount Transceivers

## VHF MARINE TRANSCEIVER **IC-M323**

### Top Performance, Great Value



Also available in black version.



### FEATURES

- Powerful, compact VHF/DSC with Icom value and reliability
- New intuitive user interface
- High definition dot-matrix display
- Meets latest class D DSC specifications
- IPX7 waterproof
- Dual watch and Tri-watch functions
- Instant access to Ch 16 and Call channel
- Tag scan and favorite channel functions
- AquaQuake™ draining function
- Auto scan function
- Display and keypad backlighting
- External speaker connection
- Black and super white color version

# AIS Transponder and AIS Receiver

## CLASS B AIS TRANSPONDER **MA-500TR**

### Fully Capable Class B AIS Transponder



\* Option for IC-M424, IC-M400BB and IC-M323

### FEATURES

- Large full dot-matrix display
- CPA and TCPA collision-risk management
- AIS target call with Icom VHF transceivers
- 100 waypoint memories
- 3-line NMEA input/output
- MXG-5000 GPS receiver\*

\* The MXG-5000 may be sold separately, depending on country.



MXG-5000 GPS receiver



## AIS RECEIVER **MXA-5000**

### Real-time Vessel Traffic Information for Collision-Risk Management




### FEATURES

- Monitors Class A and Class B AIS data
- Dual mode data output (GPS chart plotter and PC connection)
- Built-in antenna splitter to share one antenna
- GPS data multiplex
- Compact size, 132(W)×34(H)×155(D) mm dimensions




# Options

## VHF FIXED MOUNT TRANSCEIVERS

MODEL NAME	HAND MICROPHONES		COMMANDMIC™	EXTENSION CABLES	FLUSH MOUNT KITS
	HM-196B/SW Speaker microphone	HM-200B/SW	HM-195B/SW	OPC-1541 6.1 m; 20 ft cable for use with COMMANDMIC	MB-132
IC-M423					
IC-M400BB	✓		✓	(Use with HM-195B/SW) ✓	✓
IC-M323		✓			✓

## AIS TRANSPONDER AND AIS RECEIVER

MODEL NAME	FLUSH MOUNT KITS	
	MB-75	
MA-500TR		✓
MXA-5000		

: Applicable

: Not applicable

# Specifications

## VHF FIXED MOUNT TRANSCEIVERS

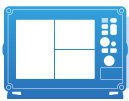
	IC-M423	IC-M400BB	IC-M323
<b>Frequency range</b>	Tx: 156.000–161.450MHz Rx: 156.000–163.425MHz CH 70: 156.525MHz	Tx: 156.000–161.450MHz Rx: 156.000–163.425MHz CH 70: 156.525MHz	Tx: 156.000–161.450MHz Rx: 156.000–163.425MHz CH70: 156.525MHz
<b>Power supply requirement</b>	13.8V DC nominal (10.8–15.6V DC)	13.8V DC nominal (10.8–15.6V DC)	13.8V DC nominal (10.8–15.6V DC)
<b>Dimensions (projections not included; WxHxD)</b>	180x82x119.9mm	IC-M400BB 216x79x125mm HM-195B/SW 67.5x144.5x37mm	180x82x119.9mm
<b>Weight (approx.)</b>	1.2kg	IC-M400BB 830g HM-195B/SW 400g	1.2kg
<b>Current drain</b>	<b>Transmit (High)</b> 5.5A <b>Max. audio</b> 5A typ. (Ext SP, RX SP ON)	5.5A 3.5A	5.5A 1.5A
<b>Sensitivity</b>	<b>Main</b> (20dB SINAD) -5dBµ emf typ. <b>DSC</b> (1% BER) -4dBµ emf typ.	-5dBµ emf typ. -4dBµ emf typ.	-5dBµ emf typ. -4dBµ emf typ.
<b>Intermodulation</b>	<b>Main</b> More than 68dB <b>DSC</b> (1% BER) More than 68dBµ emf	More than 68dB More than 68dBµ emf	More than 68dB More than 68dBµ emf
<b>Audio output power (10% dist./4Ω load)</b>	More than 10W (External speaker)	More than 2W (HM-195B/SW) More than 10W (RX Speaker)	More than 2W
<b>RF output power</b>	25/1W	25/1W	25/1W

Measurements made in accordance with EN 301 025-2, -3.

## AIS TRANSPONDER AND AIS RECEIVER

	MA-500TR	MXA-5000
<b>Frequency range (Unit: MHz)</b>	161.975, 162.025 (default), 156.025–162.025	Rx: 161.975, 162.025 Simultaneous reception
<b>Type of emission</b>	16K0GXW (GMSK)	16K0F1D (GMSK)
<b>Power supply requirement</b>	12.0V DC (9.6–15.6V)	12.0V DC (10.8–15.6V)
<b>Dimensions (projections not included; WxHxD)</b>	165x110x123 mm	132x34x155 mm
<b>Weight (approx.)</b>	1.0kg	460g
<b>Current drain</b>	<b>Transmit</b> 1.5A <b>Receive</b> 0.7A	– 0.25A
<b>Sensitivity (20% error rate)</b>	–110dBm	–116dBm typ.
<b>Intermodulation rejection</b>	65dB	65dB
<b>RF output power</b>	2W	–

Measurements made in accordance with IEC62287-1.



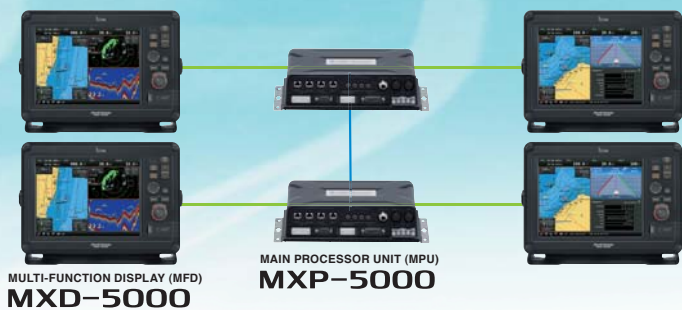
## System Overview

The MarineCommander™ is Icom's marine navigation system, which integrates various marine modules such as a fish finder, marine radar, AIS and VHF transceiver into the multi-function display (MFD).



## Affordable Dual Display Connection Up to Four Displays in a System

The MarineCommander allows you to connect two MFDs simultaneously. All connected modules including chart data, fish finder and marine radar can be shared with two MFDs and provide separate operation. When connecting two MarineCommanders via a data cable, up to 4 displays can be used and C-MAP™ chart data can be shared in the system.



## Daylight Viewable Display

The 12.1 inch size MFD provides 800x600 pixels resolution. The 900cd/m² high brightness, color LCD with anti-reflecting surface coating glass offers bright, vivid indication in detail even in under direct sunlight.



## C-MAP™ MAX Compatible

The MarineCommander is compatible with the C-MAP™ MAX chart by JEPPESEN in an SD card format\*. The MarineCommander provides quick and fast responding rendering performance. The C-MAP™ MAX chart provides guardian alarm, route-check, perspective view and Port database for your safe and easy navigation.



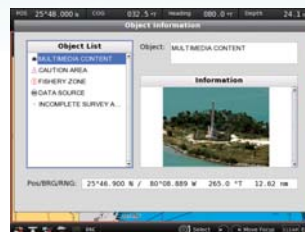
\* Chart data is not supplied from Icom.



Perspective view (bird view)



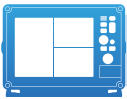
Chart plotter



Object information of the C-MAP™ chart data base



Nav-course monitor (upper right) & Nav-waypoint (bottom right)



## Marine Radar

The MXR-5000R/T marine radar provides clear target discrimination. Waypoint and AIS target can be overlaid on the radar screen. The marine radar helps collision avoidance and increases your safety at sea. The radar images can be overlaid on the plotter screen in the same scale and helps you to detect dangerous objects.



Radar screen

ATA List

### Simplified ATA (Automatic Tracking Aid)

The simplified ATA function allows you to plot up to 10 targets and the radar continues to track the targets automatically. The ATA targets can be overlaid on the plotter screen.

### MARINE RADAR MXR-5000T

- 4kW, 4 feet (120cm) open array scanner
- Up to 48NM observation • 48 rpm high rotation speed



or

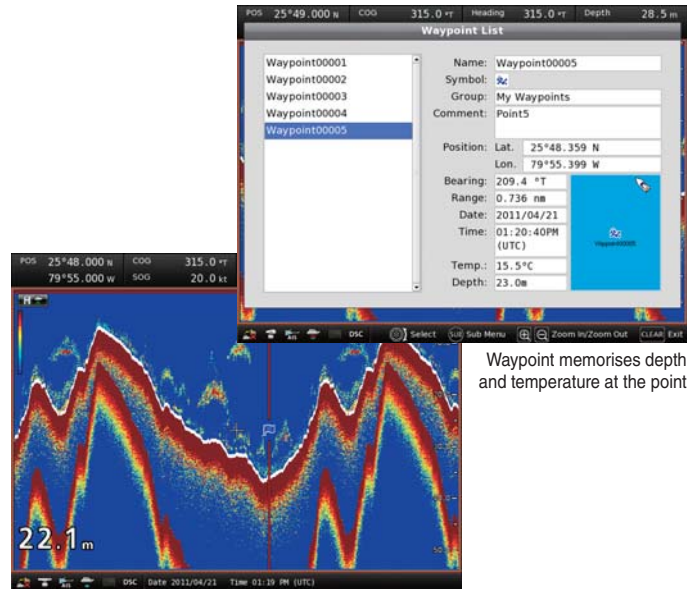
### MARINE RADAR MXR-5000R

- 4kW, 2 feet (60cm) radome scanner
- Up to 36NM observation • 48 rpm high rotation speed



## Fish Finder

When a fish finder module is connected, the MarineCommander system can have a dual frequency sounder function. Using the 50kHz/200kHz dual frequency mode, the MarineCommander enhances the separation and helps in fish detection.



Sounder screen

Waypoint memorises depth and temperature at the point

### Additional data for waypoints

When used with the fish finder module, the MarineCommander memorizes the waypoint information with depth and temperature data.

### FISH FINDER MXF-5000



+

#### EX-3193

- 600W transom transducer
- Depth, speed and temperature in one housing
- 50kHz and 200kHz dual frequency

or

#### EX-3194

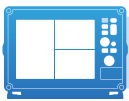
- 600W thru-hull transducer
- Depth, speed and temperature in one housing
- 50kHz and 200kHz dual frequency

or

#### EX-3195

- 1kW thru-hull transducer
- Depth and fast-response water-temperature sensor
- 50kHz and 200kHz dual frequency





## AIS (Automatic Identification System)

AIS (Automatic Identification System) receives real-time vessel traffic information broadcasted by other AIS equipped vessels. Using the optional MA-500TR or MXA-5000, the AIS data can be overlaid on the plotter and radar screen.



Full AIS Data



AIS TRANSPONDER  
**MA-500TR**



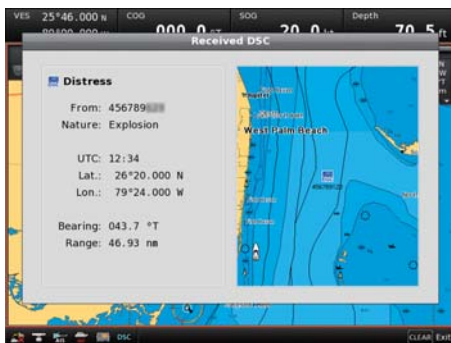
AIS RECEIVER  
**MXA-5000**



## VHF Transceiver

The MarineCommander has the capability to be connected to compatible Icom VHF transceivers.\* Various types of DSC calls, including individual, group, all ship, position and polling request\*, can be initiated from the MarineCommander. Received DSC messages and position information can be shown on the plotter display.

\*Type of transmitting DSC calls are depending on the connected VHF transceiver's capability.



Received DSC message



VHF MARINE TRANSCEIVER  
**IC-M423**



VHF MARINE TRANSCEIVER  
**IC-M400BB**



VHF MARINE TRANSCEIVER  
**IC-M323**



## GPS Receiver

The MXG-5000 is a 12 channel GPS receiver with WAAS, EGNOS and MSAS differential corrections. It offers accurate position information and features IPX6 high-pressure water jet resistance.



GPS RECEIVER  
**MXG-5000**



## Engine Monitoring

When connected to an NMEA 2000 engine interface, the MarineCommander shows current data on a virtual engine meter.



Graphic screens



## USB Flash Drive Connection

The MFD has a USB slot to connect with a USB flash drive. Waypoint, track and route information and memo data can be backed up to a USB flash and imported to other MarineCommanders or a PC.



SD card slot (above) and USB slot

## Other Features

- The external display connector (analog RGB) allows you to output to an external display
- Four RCA connectors for video input (NTSC or PAL format)
- Multiple language display (English/French/Spanish)
- External NMEA2000 Connection (Engine, Fuel, Engine Temperature, Wind, GPS, Compass, STW)
- Simulator mode can demonstrate key system functions using only the MXP-5000 and MXD-5000.
- Memo function allows you to store a comment with picture data\* and position information.

\* To show picture data, the picture data must be stored in the connected USB flash drive.

This product includes software (part of top\_wrappers) developed by the University of California, Berkeley. This product includes software developed by the University of California, Berkeley and its contributors.

# Specifications

## MULTI-FUNCTION DISPLAY

	MXD-5000
Multi-function display	12.1 inch TFT
Screen size	246x184.5 mm
Screen resolution	SVGA 800x600 dots
Power supply	30V DC (Supplied from MXP-5000)
Dimensions (WxHxD) (Projections not included)	386x274x69.2 mm (without bracket) 404x299x102 mm (with bracket)
Weight (approx.)	3.3kg (with bracket) 3.8kg (without bracket)
Usable temperature range	-20°C to +60°C
Waterproofing	IPX7
Cable length	5m
Optional extension cable	EX-3187 (5m)

## MAIN PROCESSOR UNIT

	MXP-5000
Power supply	12/24V DC (10.8 to 31.2V DC)
Current drain (at 12V DC) (at Maximum brightness)	Less than 4.7A (One MXD-5000) Less than 7.7A (Two MXD-5000s)
Dimensions (WxHxD) (Projections not included)	360x88x228.8mm
Weight (approx.)	4.25kg
Usable temperature range	-20°C to +60°C
Waterproofing	IPX4

## FISH FINDER

	MXF-5000
Power supply	12/24V DC (10.8 to 31.2V DC)
Current drain (at 12V DC)	Less than 0.6A (Water depth range: 40m, output power 600W) Less than 1.0A (Water depth range: 40m, output power 1kW)
Output power	600W/1KW
Transmission frequency	50kHz ±1kHz 200kHz ±1kHz
Dimensions (WxHxD) (Projections not included)	250x67x200 mm
Weight (approx.)	2.18kg
Usable temperature range	-20°C to +60°C
Waterproofing	IPX4
Optional data cable	OPC-1895 (20m)

## TRANSDUCERS

	EX-3193	EX-3194	EX-3195
Type	600W transom type, built-in boat speed and temperature sensors	600W thru-hull type, built-in boat speed and temperature sensors	1kW thru-hull type, built-in temperature sensors
Output power	600W	600W	1kW
Operating frequency	50kHz, 200kHz	50kHz, 200kHz	50kHz, 200kHz
Beamwidth	50kHz: 45°, 200kHz: 11°	50kHz: 45°, 200kHz: 11°	50kHz: 15°x21°, 200kHz: 3°x5°
Vessel speed sensor	18,000 p/nm	19,000 p/nm (with fairing) 21,500 p/nm (without fairing)	-
Speed range	1kt-44kt	1kt-44kt	-
Weight (approx.)	0.5kg	2.5kg	3.6kg
Optional transducer ext. cable	OPC-1929 (6m)	OPC-1929 (6m)	OPC-1929 (6m)

All stated specifications are subject to change without notice or obligation.

Icom, Icom Inc. and the Icom logo are registered trademarks of Icom Incorporated (Japan) in the United States, the United Kingdom, Germany, France, Spain, Russia, Japan and/or other countries. SUBMERSIBLE PLUS, COMMANDMIC, AQUAQUAKE and MarineCommander are trademarks of Icom Inc. (Japan) C-MAP is a trademark of Jeppesen.

## Icom Inc.

1-1-32, Kami-minami, Hirano-ku, Osaka 547-0003, Japan Phone: +81 (06) 6793 5302 Fax: +81 (06) 6793 0013

[www.icom.co.jp/world](http://www.icom.co.jp/world)

Count on us!

### Icom America Inc.

2380 116th Avenue NE,  
Bellevue, WA 98004, U.S.A.  
Phone: +1 (425) 454-8155  
Fax: +1 (425) 454-1509  
E-mail: [sales@icomamerica.com](mailto:sales@icomamerica.com)  
URL: <http://www.icomamerica.com>

### Icom Canada

Glenwood Centre #150-6165 Highway 17,  
Delta, B.C., V4K 5B8, Canada  
Phone: +1 (604) 952-4266  
Fax: +1 (604) 952-0090  
E-mail: [info@icomcanada.com](mailto:info@icomcanada.com)  
URL: <http://www.icomcanada.com>

### Icom Brazil

Rua Pernambuco, 353 - Sala 901  
Belo Horizonte, M.G.  
30130-150, Brazil  
Phone: +55 (31) 3582 8847  
Fax: +55 (31) 3582 8987  
E-mail: [sales@icombrazil.com](mailto:sales@icombrazil.com)

### Icom (Europe) GmbH

Communication Equipment  
Auf der Krautweide 24  
65812 Bad Soden am Taunus, Germany  
Phone: +49 (6196) 76685-0  
Fax: +49 (6196) 76685-50  
E-mail: [info@icom-europe.com](mailto:info@icom-europe.com)  
URL: <http://www.icomeurope.com>

### Icom Spain S.L.

Ctra. Rubi, No. 88 "Edificio Can Castanyer"  
Bajos A 08174, Sant Cugat del Valles,  
Barcelona, Spain  
Phone: +34 (93) 590 26 70  
Fax: +34 (93) 589 04 46  
E-mail: [icom@icomspain.com](mailto:icom@icomspain.com)  
URL: <http://www.icomspain.com>

### Icom Polska Sp. Z o.o.

80-286 Gdansk, Jaskowa Dolina St. 75, Poland  
Phone: +48 (58) 551 0484  
Fax: +48 (58) 551 4720  
E-mail: [icompolska@icompolska.com.pl](mailto:icompolska@icompolska.com.pl)  
URL: <http://www.icompolska.com.pl>

### Icom (UK) Ltd.

Blacksole House, Altira Park,  
Herne Bay, Kent, CT6 6GZ, U.K.  
Phone: +44 (0) 1227 741741  
Fax: +44 (0) 1227 741742  
E-mail: [info@icomuk.co.uk](mailto:info@icomuk.co.uk)  
URL: <http://www.icomuk.co.uk>

### Icom France s.a.s.

Zac de la Plaine,  
1 Rue Brindejonc des Moulinais, BP 45804,  
31505 Toulouse Cedex 5, France  
Phone: +33 (5) 61 36 03 03  
Fax: +33 (5) 61 36 03 00  
E-mail: [icom@icom-france.com](mailto:icom@icom-france.com)  
URL: <http://www.icom-france.com>

### Icom (Australia) Pty. Ltd.

Unit 1 / 103 Garden Road,  
Clayton, VIC 3168 Australia  
Phone: +61 (03) 9549 7500  
Fax: +61 (03) 9549 7505  
E-mail: [sales@icom.net.au](mailto:sales@icom.net.au)  
URL: <http://www.icom.net.au>

### Icom New Zealand

146A Harris Road, East Tamaki,  
Auckland, New Zealand  
Phone: +64 (09) 274 4062  
Fax: +64 (09) 274 4708  
E-mail: [inquiries@icom.co.nz](mailto:inquiries@icom.co.nz)  
URL: <http://www.icom.co.nz>

### Asia Icom Inc.

6F No. 68, Sec. 1 Cheng-Teh Road,  
Taipei, Taiwan, R.O.C.  
Phone: +886 (02) 2559 1899  
Fax: +886 (02) 2559 1874  
E-mail: [sales@asia-icom.com](mailto:sales@asia-icom.com)  
URL: <http://www.asia-icom.com>

Your local distributor/dealer:

## RADAR UNITS

	MXR-5000R	MXR-5000T
Power supply	12/24V DC (10.8 to 31.2V DC)	12/24V DC (10.8 to 31.2V DC)
Current drain (at 12V DC)	Less than 5.0A	Less than 5.5A
Dimensions (WxHxD) (Projections not included)	250x67x200 mm	250x67x200 mm
Weight (approx.)	2.1kg	2.1kg
Usable temperature range	-20°C to +60°C	-20°C to +60°C
Waterproofing	IPX4	IPX4
Optional data cable	OPC-1895 (20m)	OPC-1895 (20m)

## SCANNER UNITS

	MXR-5000R Radome scanner	MXR-5000T Open array scanner
Type	2ft (60cm) radome	4ft (120cm) open array
Peak output power	4kW	4kW
Maximum range	36NM	48NM
Rotation speed	24 rpm, 36 rpm, 48 rpm	24 rpm, 36 rpm, 48 rpm
Beam width	Horizontal Vertical	Horizontal Vertical
	4°typ. 22°typ.	2°typ. 25°typ.
Side lobe	-18dB	-24dB
Polarization	Horizontal	Horizontal
Transmission frequency	9410MHz±30MHz P0N	9410MHz±30MHz P0N
Pulse width	80ns/2880Hz, 80ns/2160Hz, 250ns/2160Hz, 350ns/2160Hz, 900ns/720Hz	80ns/2880Hz, 80ns/2160Hz, 250ns/2160Hz, 350ns/2160Hz, 900ns/720Hz
Dimensions	607 (Diameter)×243 (H) mm	1205 (Diameter of rotation) ×381 (H) mm
Weight (approx.)	8kg (without cable)	17kg (without cable)
Usable temperature range	-25°C to +70°C	-25°C to +70°C
Relative humidity	Less than 95% at 40°C	Less than 95% at 40°C
Waterproofing	IPX6	IPX6
Supplied system cable	OPC-1188A (15m)	OPC-1189A (20m)
Optional radar system cables	OPC-1077A (20m) OPC-1078A (30m)	OPC-1078A (30m)