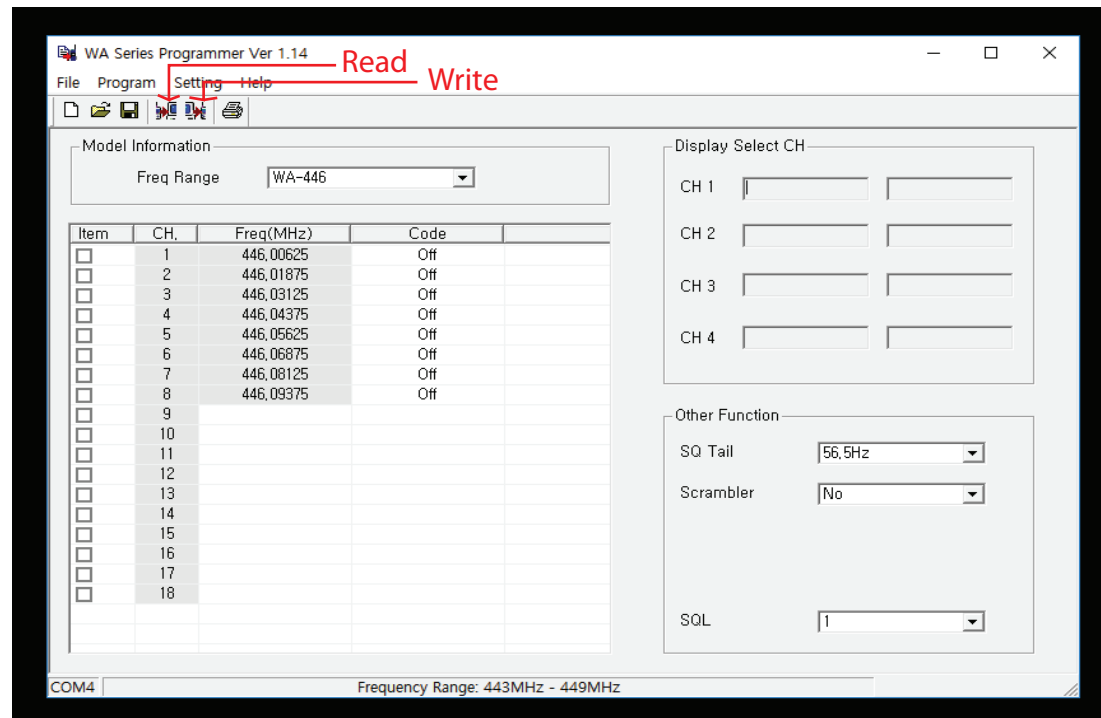
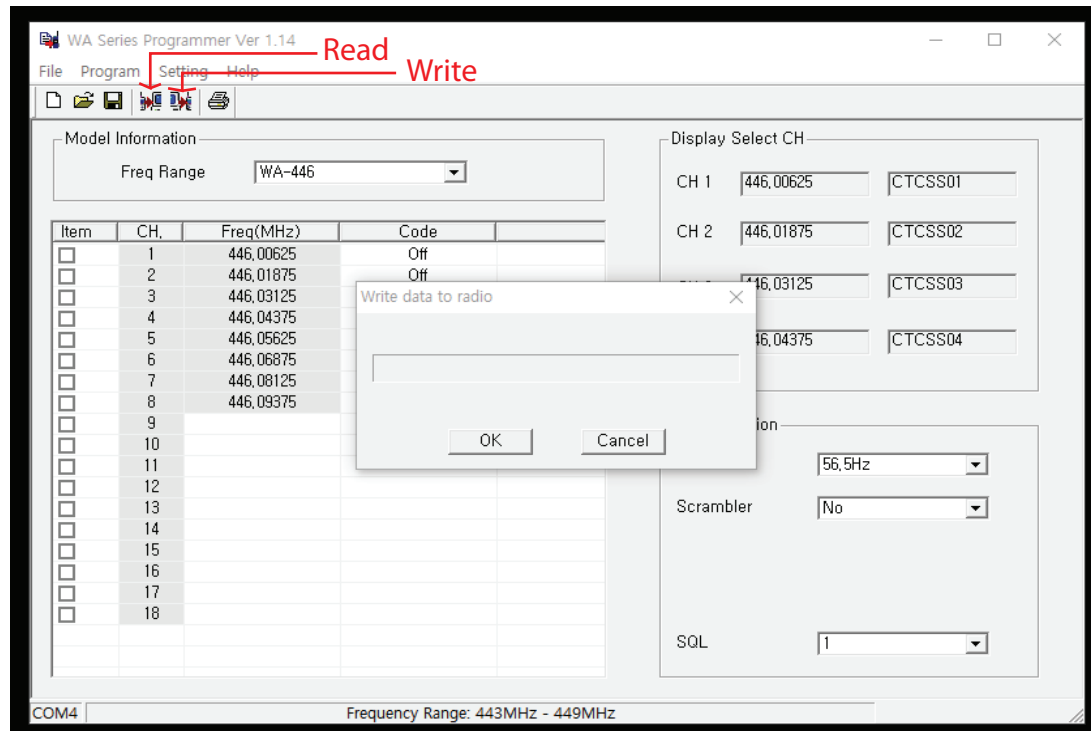


How to program Albrecht PR-446

1. Install the exe file in your P/C.
2. Open the 'WA Series programmer'.



4. Click the item of the CH numbers up to 4 out of 8 listed PMR channel numbers as a default in accordance with you want to have in your WA-446 per CH.
Tap the scroll bar in the right side of code box and choose the CTCSS code number you prefer per CH.
In case you want to have new frequency beyond PMR 8 channels, you are able to enter the new frequency from item 9 to 12, choose the CTCSS code and click item number per CH you prefer.
Available frequency range is 446MHz \pm 3MHZ for WA-446.



5. Selected frequency per CHs are displayed in the right side box of 'Display select CH' together with its CTCSS code.
6. Select SQ Tail "56.5Hz", Scrambler "No" and SQL "1".
7. Connect the P/C program cable between the P/C and the WA-446.
8. Click the "Write" in the top menu bar and tap the "OK" on the pop up of 'Write data to radio'.
9. In the WA-446, the power is turned off and on again automatically.
The new frequency data you entered is downloaded in the WA-446 completely.
10. In case you read the frequency data you have in the WA-446 and revise it, open the 'WA Series programmer'.

11. Connect programmable cable between the P/C and the WA-446 and click the "Read" icon in the top menu bar.
12. Tap the "OK" on the pop up of 'Read data from radio'.
In the WA-446, the power is turned off and on again automatically.
After that, the frequency list of WA-446 has is displayed.
13. Enter the new frequency as above step 4~6 and then click the "Write" in the top menu bar and tap the "OK".
14. In the WA-446, the power is turned off and on again automatically.
The new frequency data you entered is downloaded in the WA-446 completely.